



**USB Instruments**

**EasyScope II for PS40M10  
"Swordfish" Help**

# Table of Contents

<b>Part I Introduction</b>	<b>3</b>
1 Welcome to EasyScope II for PS40M10 .....	3
2 EasyScope II Features .....	4
<b>Part II Installing EasyScope II</b>	<b>5</b>
1 Installing the EasyScope II Software .....	5
2 Installing the USB Drivers .....	10
<b>Part III Using EasyScope II</b>	<b>13</b>
1 EasyScope II Overview .....	13
2 Front Panel Functions .....	14
Run/Stop and Single Buttons .....	14
Timebase Settings .....	16
Input Gain Settings .....	17
GND Offset .....	19
Trigger Settings .....	20
AC/DC Coupling .....	23
Invert .....	24
Horizontal Slide Bar .....	25
Illuminate .....	26
FFT Display .....	28
FFT Overview .....	28
Man .....	29
Averaging .....	30
Zero Pad .....	31
File Menu .....	33
FFT Window Menu .....	34
Spectrum Menu .....	35
Meter Display .....	36
Timing Cursor .....	38
Y Cursor .....	40
Auto Set .....	41
3 Menu Functions .....	42
File Menu .....	42
Screen Menu .....	43
Cursors Menu .....	47
Trigger Menu .....	48
Tools Menu .....	50
Help Menu .....	51
4 Quitting EasyScope II .....	52
<b>Part IV Appendix</b>	<b>53</b>
1 Error Messages .....	53

File Not Found .....	53
Failed to Configure PS40M10 .....	54
PS40M10A B Not Found ... ..	55
FT_Write - General IO Error... ..	56
FT_GetQueueStatus - General IO Error... ..	57
<b>2 Uninstalling EasyScope II .....</b>	<b>58</b>
<b>Index .....</b>	<b>60</b>

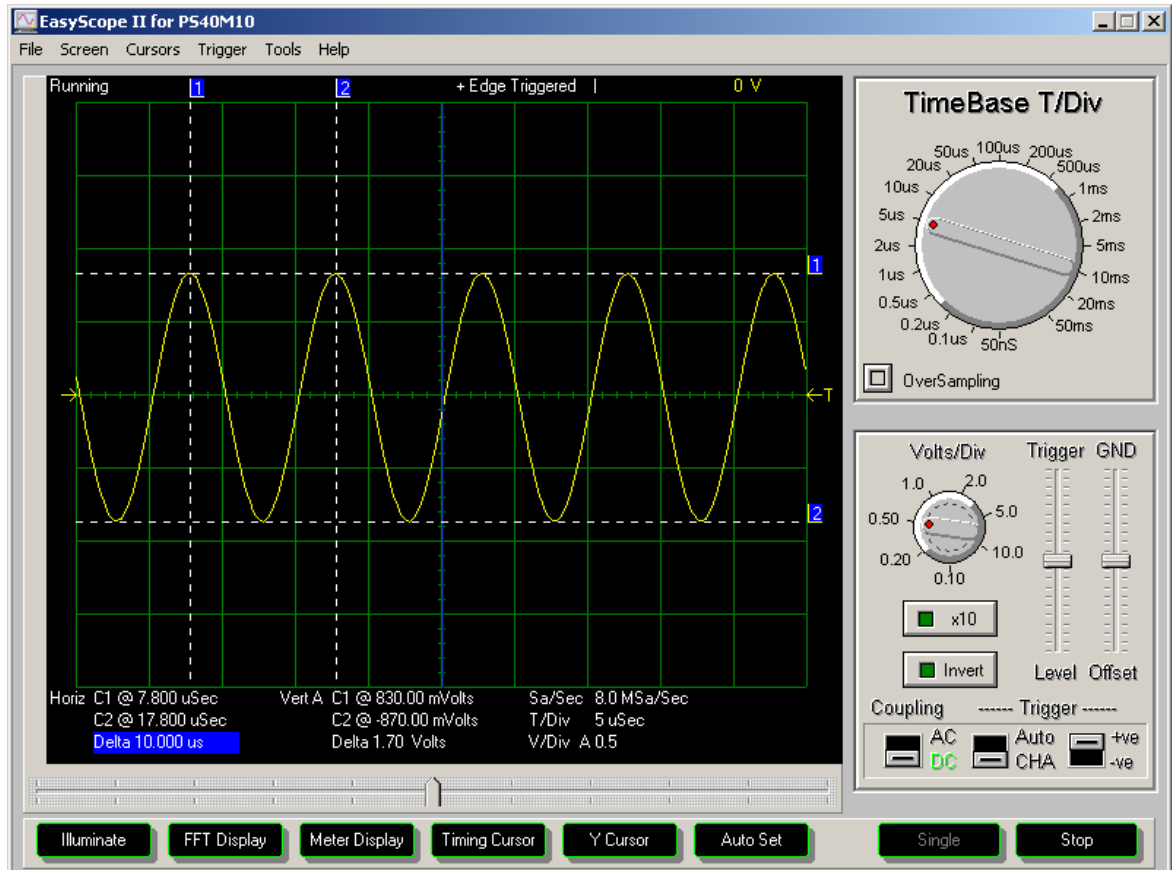
# 1 Introduction

## 1.1 Welcome to EasyScope II for PS40M10

EasyScope II is the easy to use but powerful Digital Sampling Oscilloscope application program for the USB Instruments PS40M10.

It runs on any USB 1.1 or USB 2.0 equipped PC using Windows 98, 2000 or XP.

Drivers and an instrument interface DLL are provided for Linux systems.



## 1.2 EasyScope II Features

- Attractive, easy to use visual display
- F.F.T. (Fast Fourier Transform) display
- Advanced trigger settings including edge and pulse triggering
- Delayed timebase function
- Integrated digital Volt meter
- Auto Set function
- Timebase from 50 ns/div to 50 ms/div
- Input ranges from 0.1 V/div to 10 V/div
- Integrated switch to halt data capture through hardware
- O.S.D. markers for voltage measurement
- O.S.D. markers for time / frequency measurement for complete sample
- Save oscilloscope screens to Windows BMP files
- Export 20 most recent oscilloscope traces to CSV files
- Screen printout facility
- AC/DC coupling support
- Support for x1 and x10 probes
- User-defined oscilloscope display colour themes
- Save and load colour themes to and from file
- Variable persistence mode display

## 2 Installing EasyScope II

### 2.1 Installing the EasyScope II Software

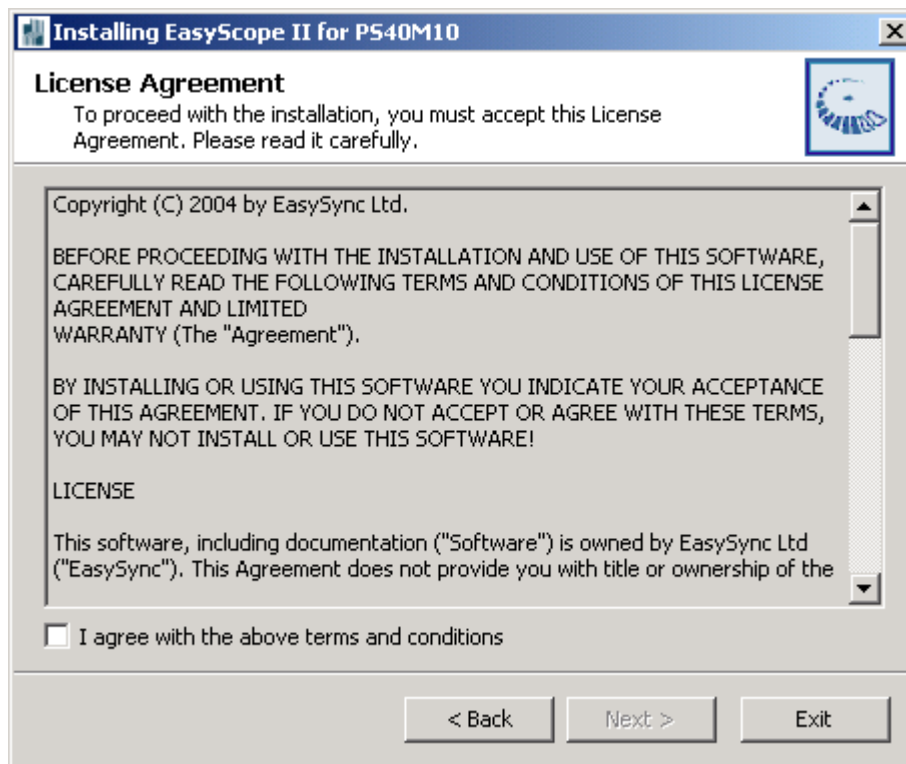
Before connecting the instrument to the PC, insert the supplied installation disk into the CD-ROM drive of your PC. The following menu will appear after a few seconds.



Click on the "Install EasyScope II Oscilloscope Application" button to launch the EasyScope installation program. The following screen will appear:

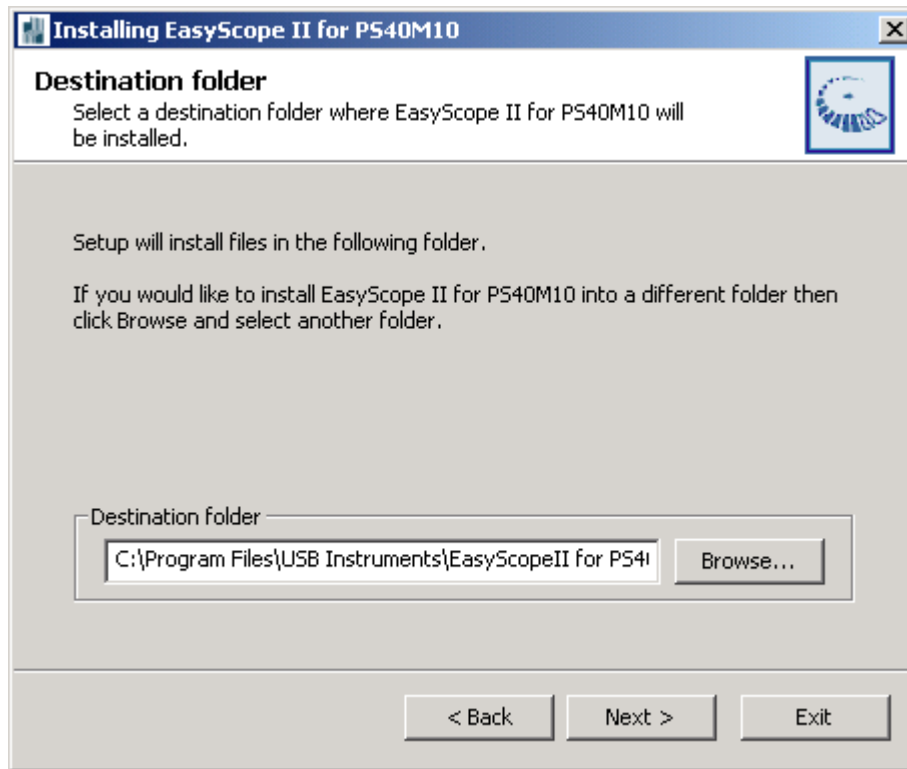


Click on the "Next" button to bring up the License Agreement Screen.

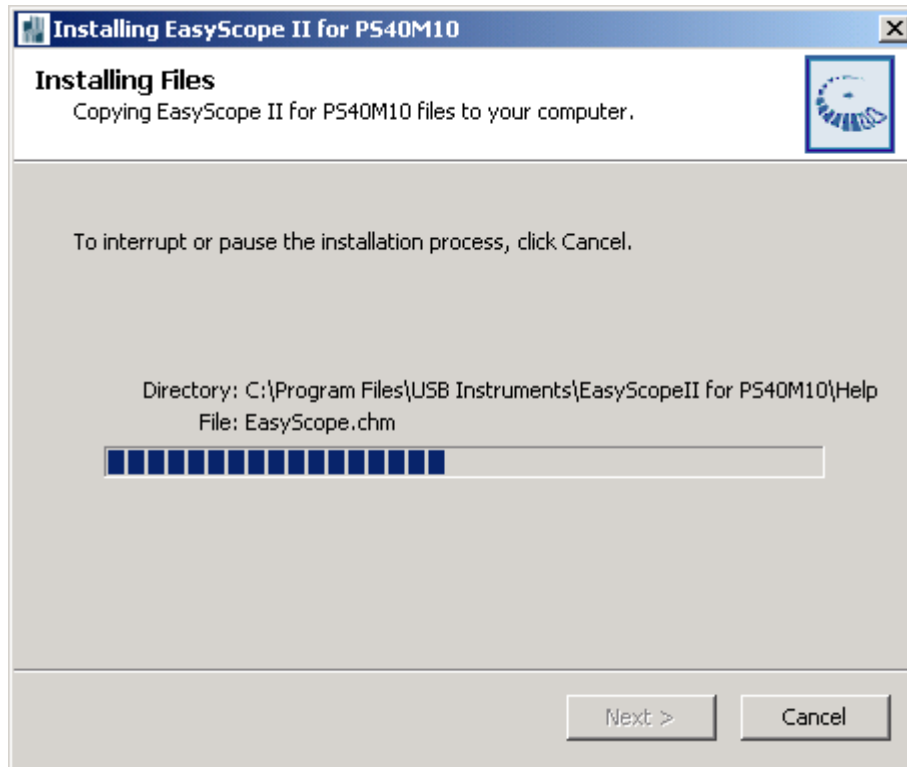


If you agree with the terms and conditions of the License Agreement, check the "I agree" box and

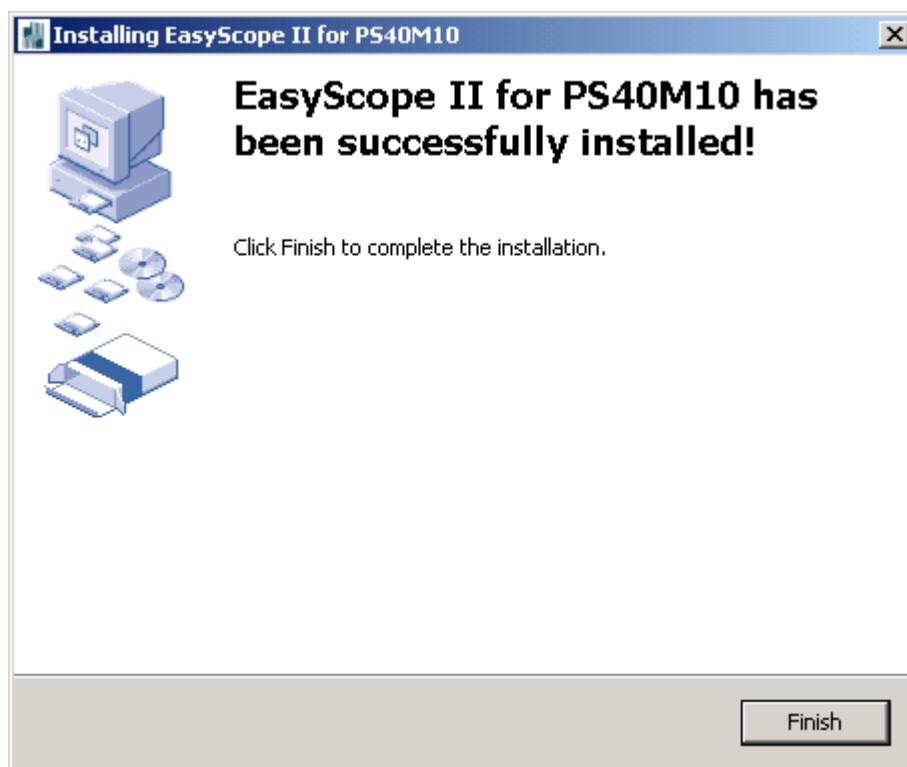
click on the "Next" button to continue the installation process else click on the "Exit" button. The "Next" button is disabled if you do not agree to the terms and conditions. Agreeing to the terms and clicking on the "Next" button brings up the following screen.



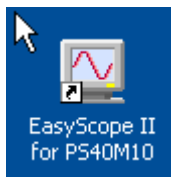
Select the directory you wish to install the EasyScope software into. A default directory is shown on the screen. Unless you have good reason to change it we suggest you use the default suggested by the installation program. Click on the "Start" button to commence copying the files to the EasyScope program directory.



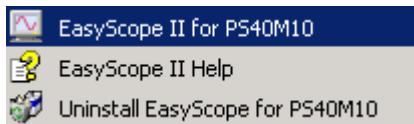
A progress screen (shown above) will appear as the files are installed. After a few seconds you should see the "Installation was completed successfully" message. Click on the "OK" button to complete the final stage of the installation process.



The installation process is now complete. You can launch the EasyScope program from the desktop by double-clicking on the EasyScope icon (pictured below).



You can also launch the EasyScope program from the Start -> Programs -> EasyScope II for PS40M10 menu on the Windows Toolbar.



As shown above, you also have access to the EasyScope Help files and Program Uninstaller from there.

Before using EasyScope, the USB drivers need to be installed. This is done by plugging the instrument into a spare USB port on the PC. The instrument should be plugged into a USB hub port of your PC or alternatively, a self-powered USB hub (one that has it's own power supply).

If this is the first time that the instrument has been plugged in, Windows will then request the USB drivers for your product. See [Installing the USB Drivers](#) for further details.

## 2.2 Installing the USB Drivers

Before using EasyScope the USB drivers need to be installed. This is done by plugging the instrument into a spare USB port on the PC. The instrument should be plugged into a USB port on your PC or alternatively, a self-powered USB hub (one that has it's own power supply).

In the case of Linux systems, please follow the installation instructions in the ReadMe.dat file located in the Linux Drivers folder on the PS40M10 CD.

In the case of Windows based systems, please follow the instructions below.

If this is the first time that the instrument has been plugged in, Windows will request the USB drivers for your product and will display an Add New Hardware Wizard dialog box. The example below is for Windows 2000 but the procedure is very similar for other Windows versions.

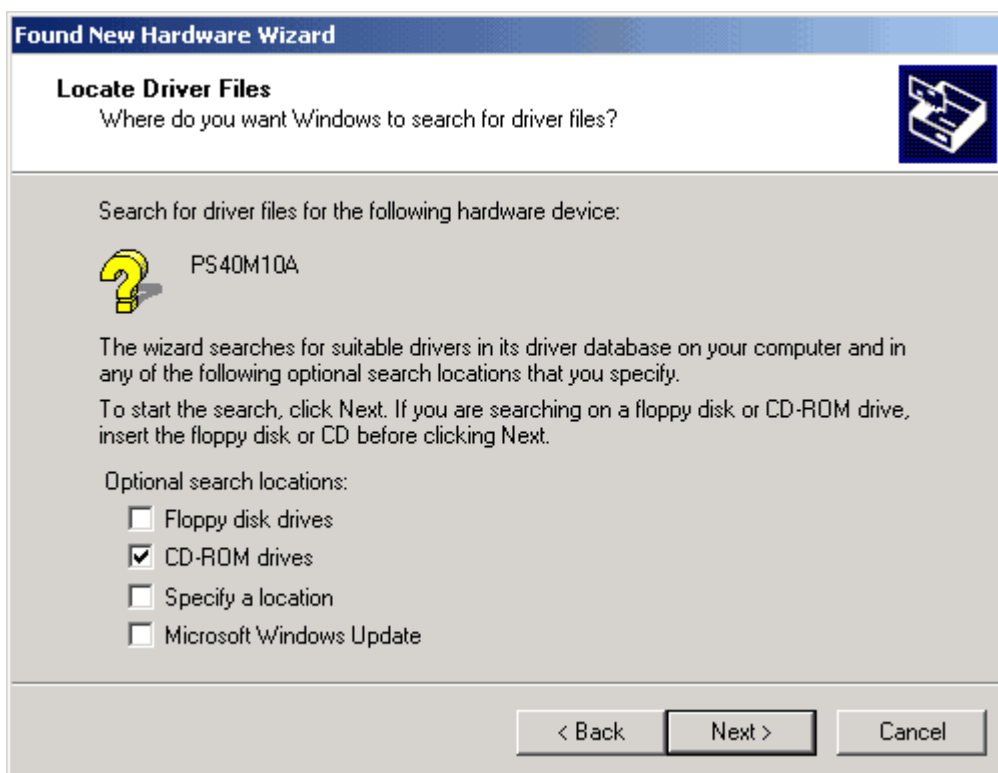
Connect the instrument to a spare USB port on the PC or self-powered hub. The following screen will appear to begin guiding you through the driver installation.



Click "Next" to proceed with the installation. The following screen will appear:



Select the option box for "Search for a suitable driver for my device (recommended)" and click "Next".



Check the box for "CD-ROM drives" and un-check all others.

NOTE: If the CD is not available and the EasyScope software has already been installed, then check the "Specify a location" box and use the Browse button to select the "Drivers\Windows Drivers" sub-directory of the EasyScope Program Files directory instead.

Keep Clicking on "Next" until the installation is finished as per the screen below.



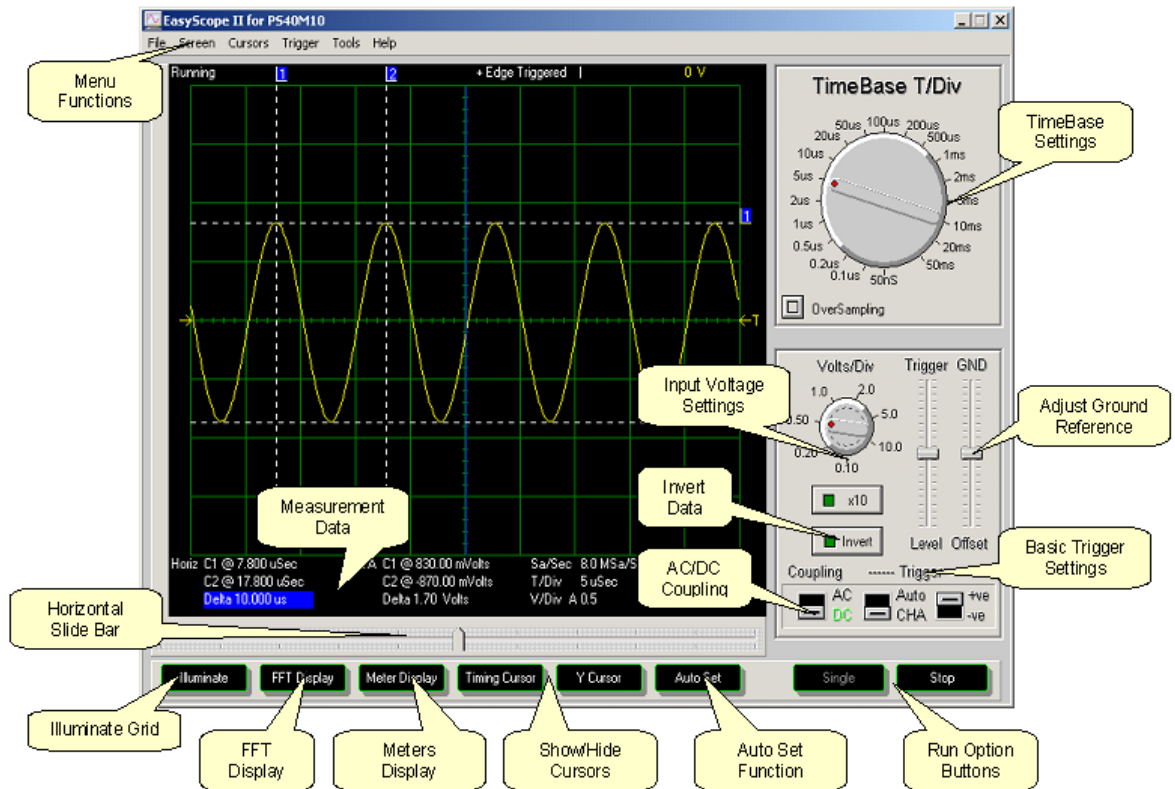
Click "Finish" to complete the installation of the first device.

If using Windows 2000, the second device will be installed automatically. For other versions of Windows, the above process may need to be repeated to complete the instrument installation.

### 3 Using EasyScope II

#### 3.1 EasyScope II Overview

The EasyScope screen is split into several functional areas as shown in the picture below. The sections that follow illustrate how to use the settings to control the functions of the instrument.



## 3.2 Front Panel Functions

### 3.2.1 Run/Stop and Single Buttons

On starting EasyScope, the program is in idle mode and displays two buttons on the bottom toolbar with the captions "Single" and "Run". In order to display a trace on the oscilloscope you need to click on either of the "Run" or "Single" buttons.



On clicking the "Run" or "Single" buttons captured data will be displayed on the screen providing that the trigger conditions are met or auto trigger is enabled.

The "Run" button is used to continuously capture and display data.

When the "Run" button is clicked, the capture / display begins and the caption of the button changes to "Stop". The "Single" button is "greyed-out" as the two functions are mutually exclusive. To stop the capture, click on the "Stop" button and the oscilloscope will change back into idle mode.



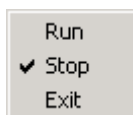
The "Single" button captures one screen's worth of data then returns the program to idle mode.

When the "Single" button is clicked, the instrument waits on the trigger conditions being met before updating the display with a single buffer of data and the caption of the "Run" button changes to "Stop". The "Single" button is "greyed-out" as the function is currently running. If the instrument does not trigger, it can be returned to idle mode by clicking the "Stop" button.



The last captured data buffer will remain displayed on the screen as long as the user does not change any of the oscilloscope settings. If desired, the screen display can be saved to a Windows Bitmap (.bmp) format file, exported to a comma separated values (.csv) file for analysis using third party programs or can be printed by any printer connected to the P.C. These subjects are dealt with in later topics.

An alternative to the Run / Stop button is provided through the [File Menu](#) at the top of the application screen. Click on "File" to select the drop down menu shown below.



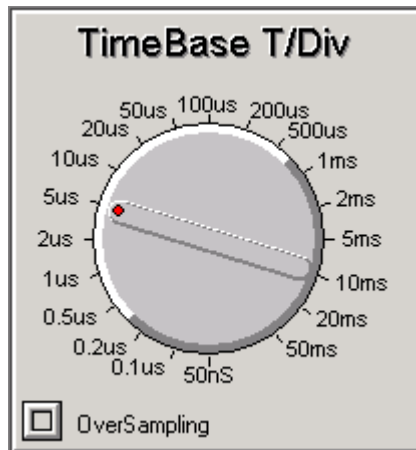
Click on "Run" or "Stop" as desired. Clicking on "Exit" will quit the EasyScope application.

A further way to stop data capture is to click the button on the PenScope casing while EasyScope

is collecting data.

### 3.2.2 Timebase Settings

The timebase settings are adjusted by clicking on the rotary switch in the Timebase Panel. There are 19 possible settings ranging from 50 ns/division (fastest) to 50 ms/division (lowest). Please note, at the lower speed settings there will be a noticeable delay between clicking on the "Run" button and the trace appearing on the oscilloscope screen. This is because the sampling (conversion) rate is low and it takes more time to capture a buffers worth of data.



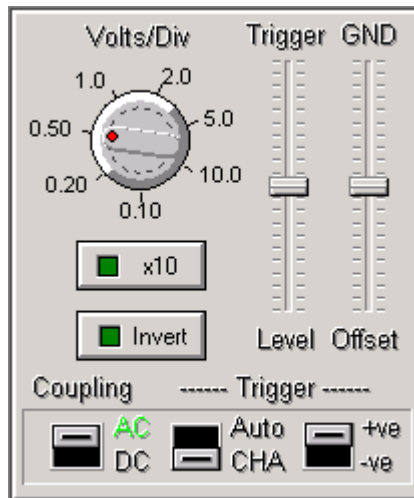
The button for 1GHz OverSampling will become checked for timebase settings of 0.5ms or less.

The timebase setting changes the sampling rate of the oscilloscope. The sampling rate is displayed on the bottom right of the oscilloscope panel shown below.

```
Sa/Sec 8.0 MSa/Sec
T/Div 5 uSec
V/Div A 0.5
```

### 3.2.3 Input Gain Settings

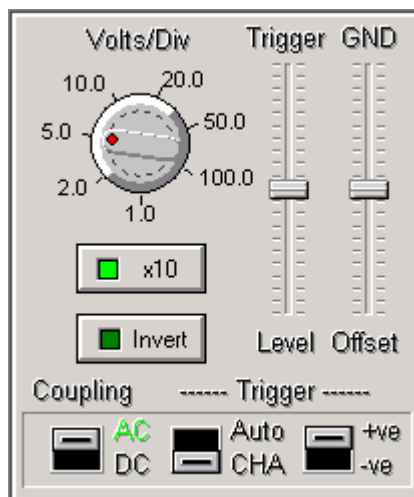
The input gain is adjusted by clicking on the Volts/Div rotary switch on the main panel shown below.



There are 7 gain settings available. Please note that if a gain setting is too high for the input signal, clipping will occur. To avoid clipping, select a larger voltage scale.

In addition, the settings depend on if the oscilloscope probe used is a x1 (1M $\Omega$  input impedance) or a x10 (10M $\Omega$  input impedance). If a x10 oscilloscope probe is used then enable the X10 setting by clicking on the X10 button located below the rotary switch. This will re-scale the switch and display cursor settings by a factor of 10.

In the picture above, the oscilloscope is setup for a x1 probe. The panel below shows the oscilloscope setup for a x10 probe.



The current gain setting is also displayed on the bottom right of the oscilloscope panel alongside the sampling rate.

Sa/Sec 8.0 MSa/Sec  
T/Div 5 uSec  
V/Div A 0.5

### 3.2.4 GND Offset

The ground (0V) reference for is shown by a small arrow on the left hand side of the screen. The colour of the arrow is the same as the trace, the default for which is yellow.

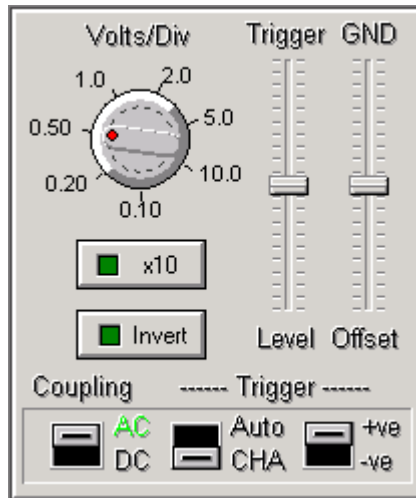


To adjust the ground reference setting, drag the Up/Down "GND Offset" slider on the main control panel. Small changes can be made by clicking. The offset can be changed both in idle mode and in run mode.



### 3.2.5 Trigger Settings

Basic trigger settings are configured using the controls on the main control panel.

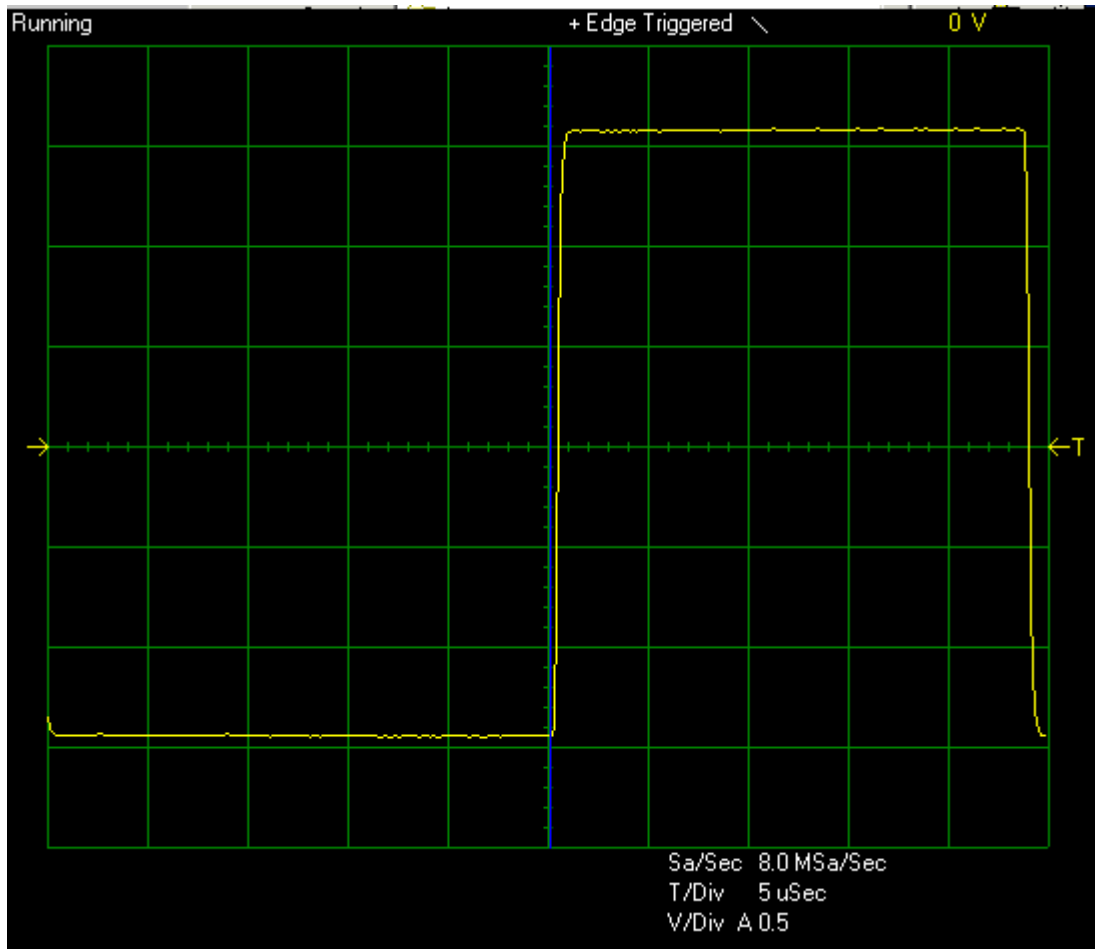


The default trigger mode is for edge triggering. Other trigger modes are explained in the [Trigger Menu](#) section.

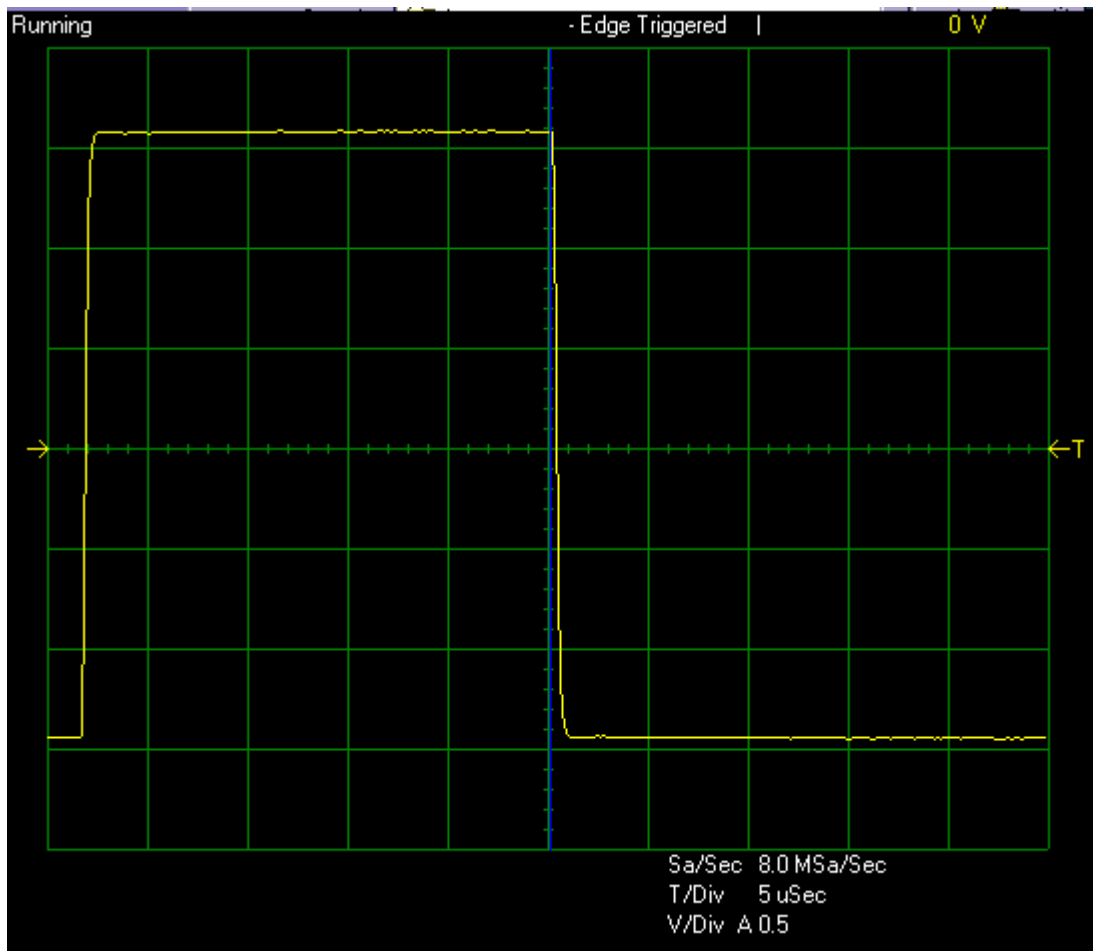
Selecting "Auto" will allow the scope to free-run and constantly collect data without waiting for a trigger event.

Selecting "CHA" will force the scope to wait on a trigger event defined by the other trigger controls before the display is updated.

Select a rising or falling edge event to trigger on by selecting "+ve" (rising edge)



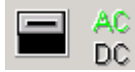
or "-ve" (falling edge).



Use the "Trigger Level" slide bar to set the desired trigger level voltage. The trigger level is shown as an arrow with a "T" to the right of the oscilloscope screen and is displayed numerically above the plot.

### 3.2.6 AC/DC Coupling

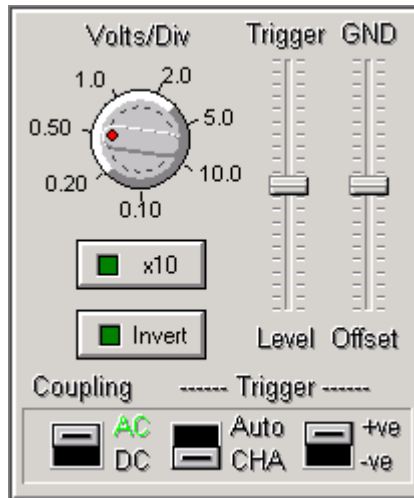
AC/DC coupling is controlled by miniature relays inside the oscilloscope. To select AC or DC coupling click on the AC/DC selector switch on the main control panel. This will instruct the oscilloscope to change the coupling from AC to DC or vice-versa. The current selection is highlighted in green to the right of the switch.



The above picture shows AC coupling selected.

### 3.2.7 Invert

The invert button is located on the main control panel.



Clicking the invert button has the effect of flipping the captured data about the ground reference value.

### 3.2.8 Horizontal Slide Bar

The horizontal slide bar beneath the plot area may be used to scroll forward and backward through the data buffer. The trigger point is in the middle of the buffer.



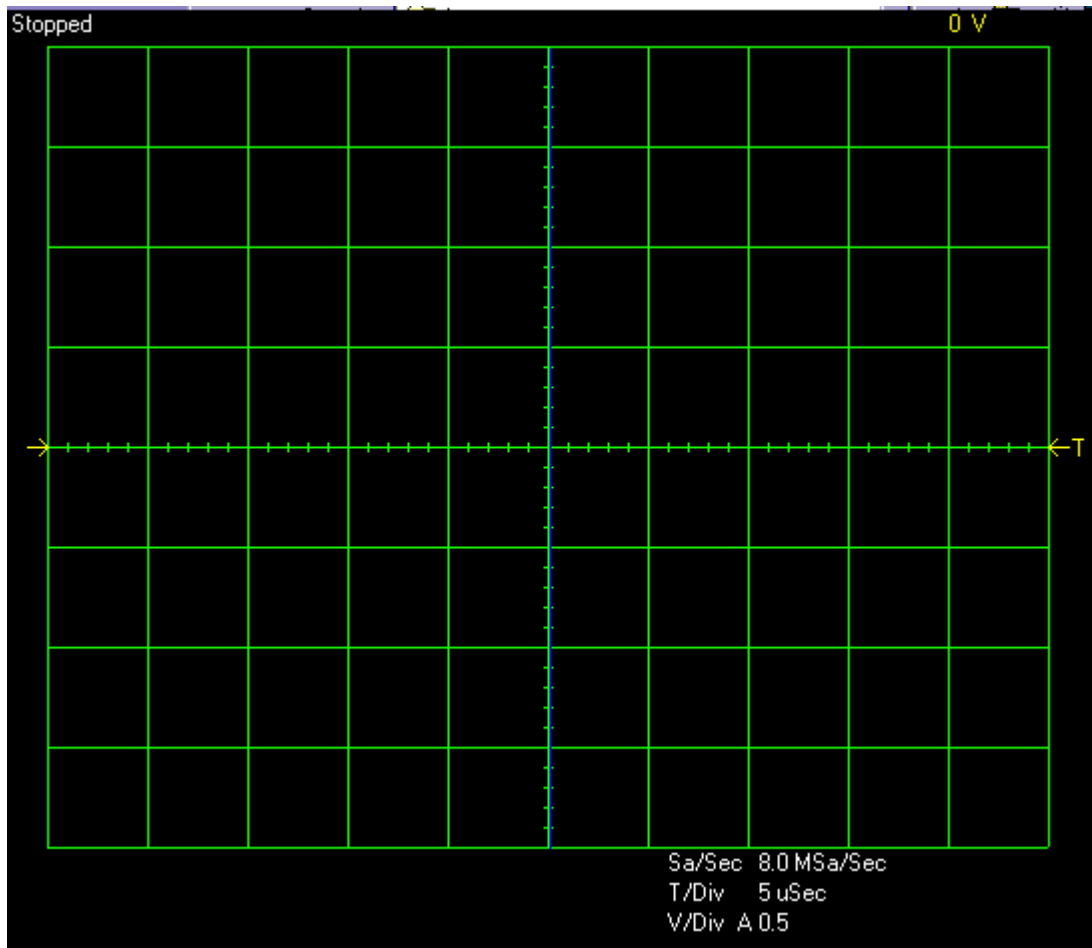
To operate the slide bar, click on the slider (positioned in the centre by default) and drag it to the desired position. The display will update as this is done.

### 3.2.9 Illuminate

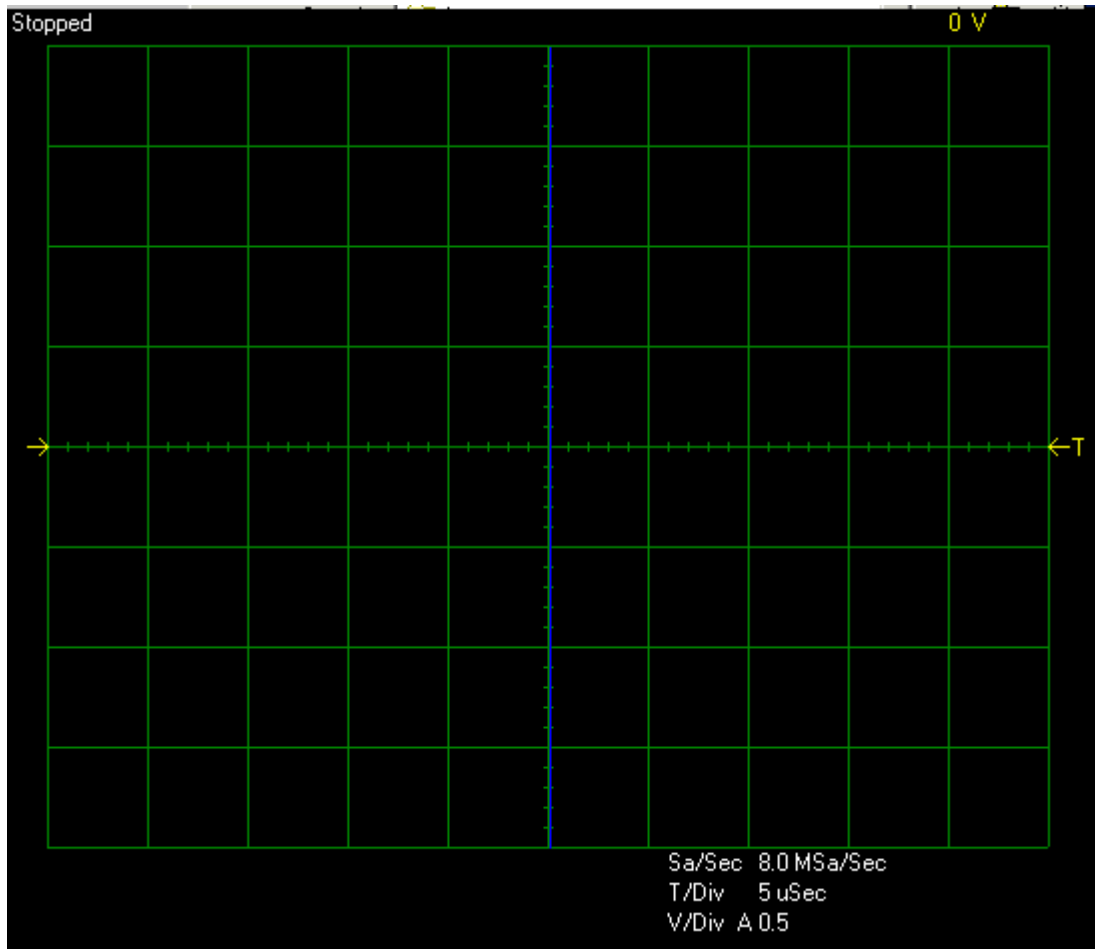
The illuminate button controls the brightness of the grid on the scope display.



With the grid illuminated, it is a bright green colour.



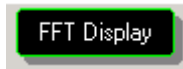
When the grid is not illuminated, it is a dark green. These colours are the default and may be customised through the [Screen Menu](#) options.



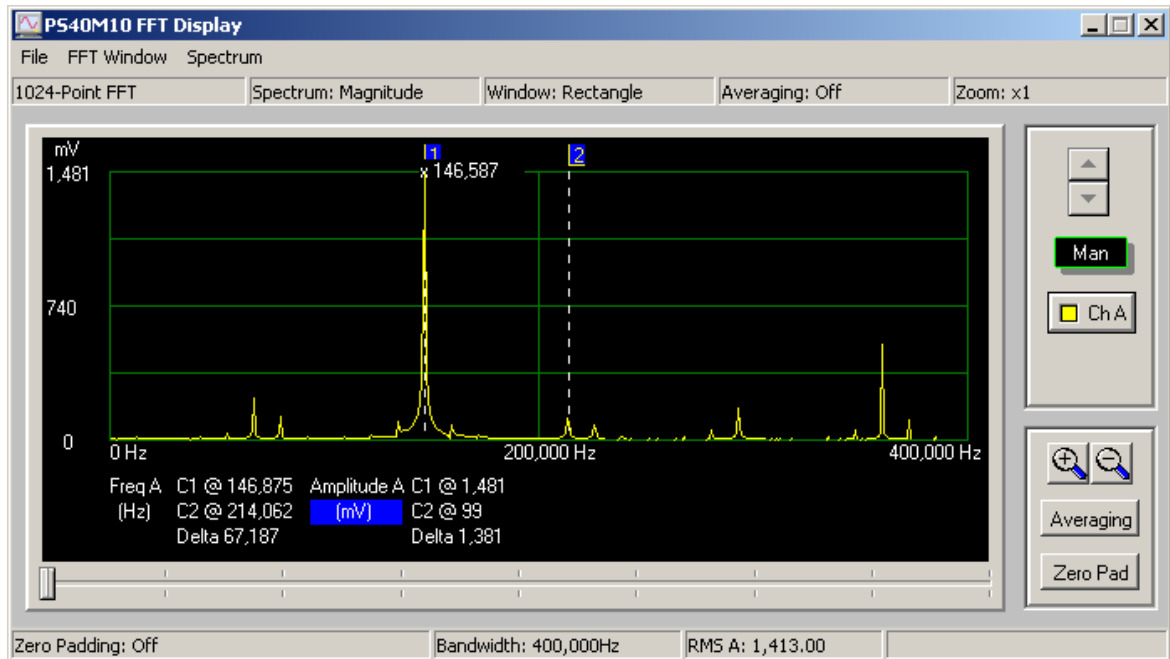
### 3.2.10 FFT Display

#### 3.2.10.1 FFT Overview

A fast Fourier transform (FFT) window may be accessed by clicking the FFT Display button.



The FFT window will appear and is shown below.



There are two cursors which may be used to measure differences in frequency. To the top of the cursors are marker blocks 1 and 2. To move a cursor, place the mouse pointer over the marker block you wish to move, and holding down the left mouse button drag the cursor to the point you wish to measure.

The units for the vertical scale may be changed between linear and logarithmic units by clicking on the blue area beneath the chart next to the word "Amplitude".

When the zoom function is active, the scroll bar at the bottom of the plot area may be used to scan through the FFT data.

### 3.2.10.2 Man

Clicking the "Man" button in the FFT window enables the up/down buttons and changes the button caption to "Auto". This allows the vertical scale of the plot to be changed manually.

Clicking on "Auto" will enable autoscaling for the vertical axis.

### 3.2.10.3 Averaging

The averaging option may be used to help eliminate noise from measurements.

The averaging options available are none, 5, 10, 20 and 50 sweeps.

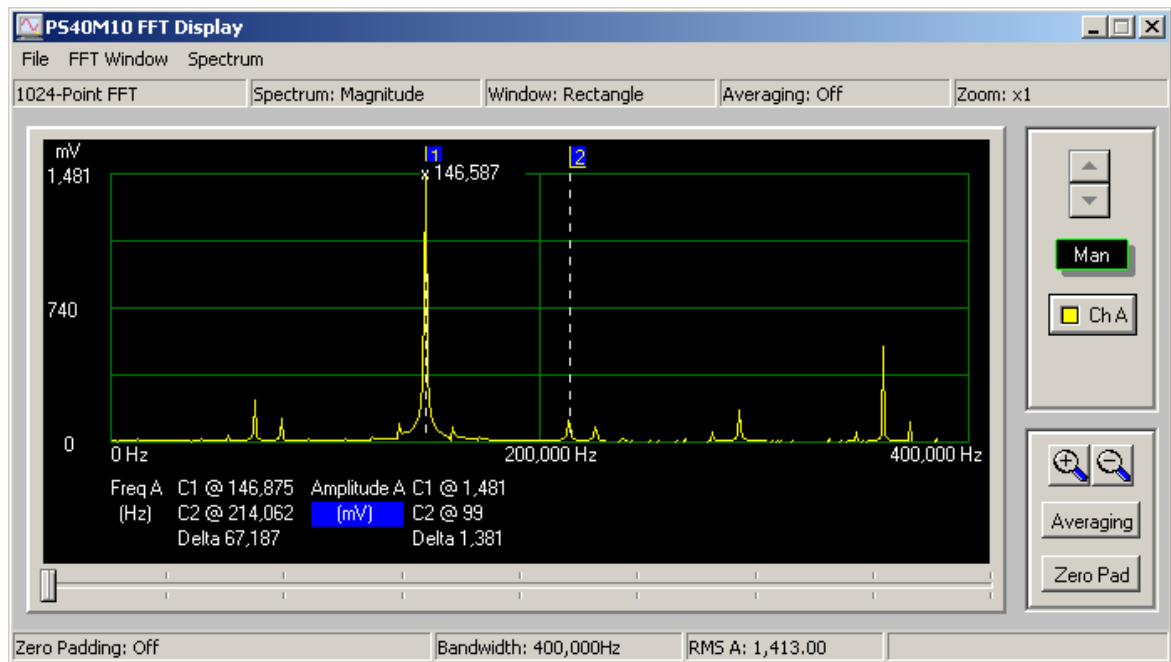
3.2.10.4 Zero Pad

Zero padding may be used to artificially increase the number of data points included in the FFT. The default is no zero padding and using the 1024 points obtained from the data buffer.

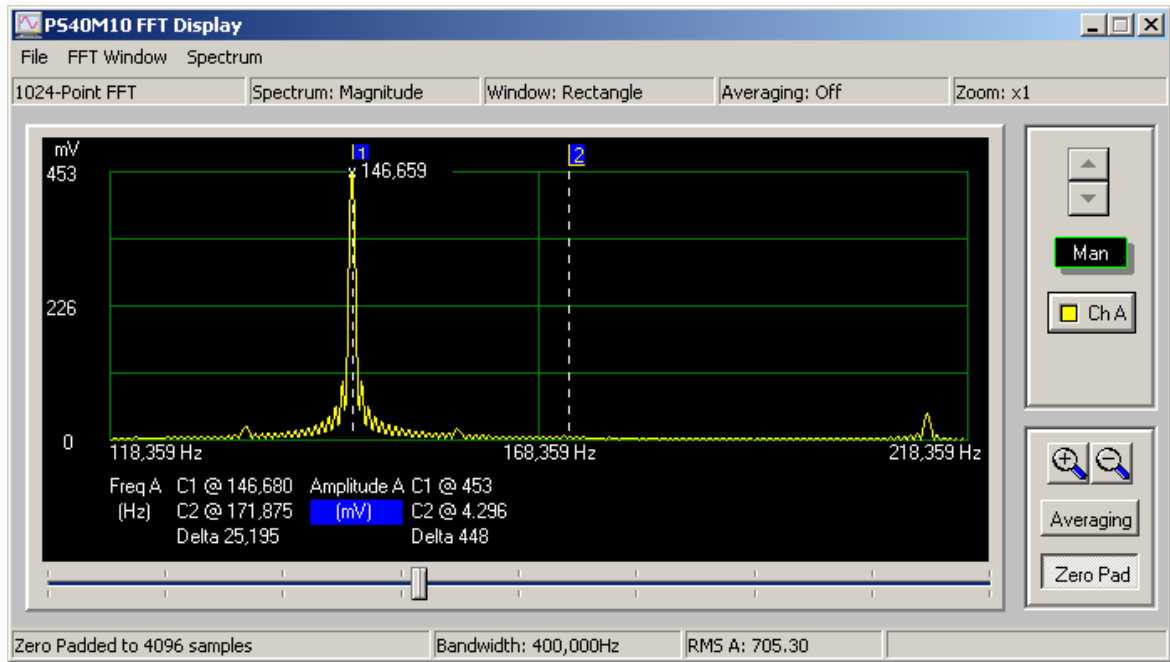
Zero padding will allow the use of either the standard 1K buffer or zero padded 2K, 4K, 8K or 16K data sets.

Increasing the zero padding has the effect of stretching the frequency axis which will allow more accurate measurement with the cursors.

The picture below shows the FFT of a 3V 150KHz square wave with no zero padding.

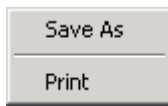


The picture below shows the same input signal with x4 zero padding.



### 3.2.10.5 File Menu

The File menu (shown below) allows access to the two features described below:



#### **Save As**

This allows the FFT screen to be saved as a Windows Bitmap (.bmp) file. When selected, a Save As dialog box appears and prompts the user for a filename.

#### **Print**

The print option allows the user to send the FFT screen directly to an installed printer.

### 3.2.10.6 FFT Window Menu

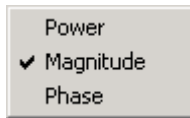
The FFT screen display can be changed to use a number of different windowing algorithms. The available windows are displayed when the FFT Window menu is selected (shown below).



The default window is Rectangle.

### 3.2.10.7 Spectrum Menu

The FFT screen display can be changed to use a number of different ways of scaling the Y-axis through the spectrum menu.

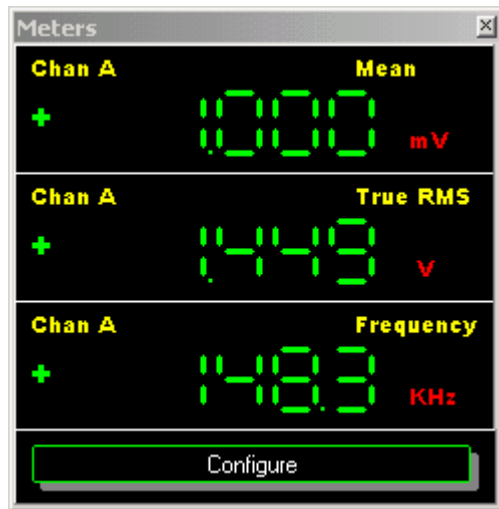


The available scaling options are Power ( $V^2$ ), Magnitude (mV) and Phase (Rad). As indicated in the [FFT Overview](#) section, by clicking the blue area on the axis of the FFT plot, the units can be changed between linear and logarithmic for each of these settings.

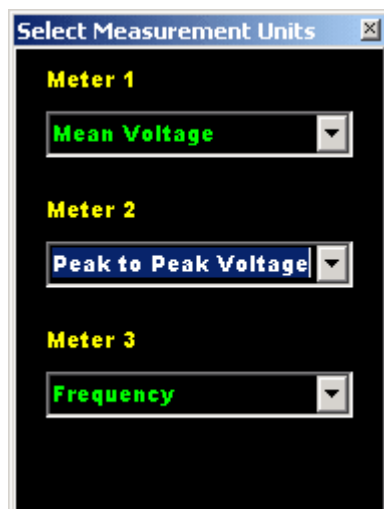
The default spectrum is Magnitude.

### 3.2.11 Meter Display

The Meter Display button function displays a small panel (shown below) showing 3 measurements of the data displayed at that time. The default measurements are mean Voltage, peak-to-peak Voltage and frequency.



The measurements displayed can be changed by clicking the Configure button at the bottom of the Meters panel which brings up the following window.



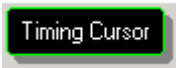
Available measurements are:

- Mean Voltage
- True RMS Voltage
- Peak to Peak Voltage
- Minimum Voltage
- Maximum Voltage
- Frequency

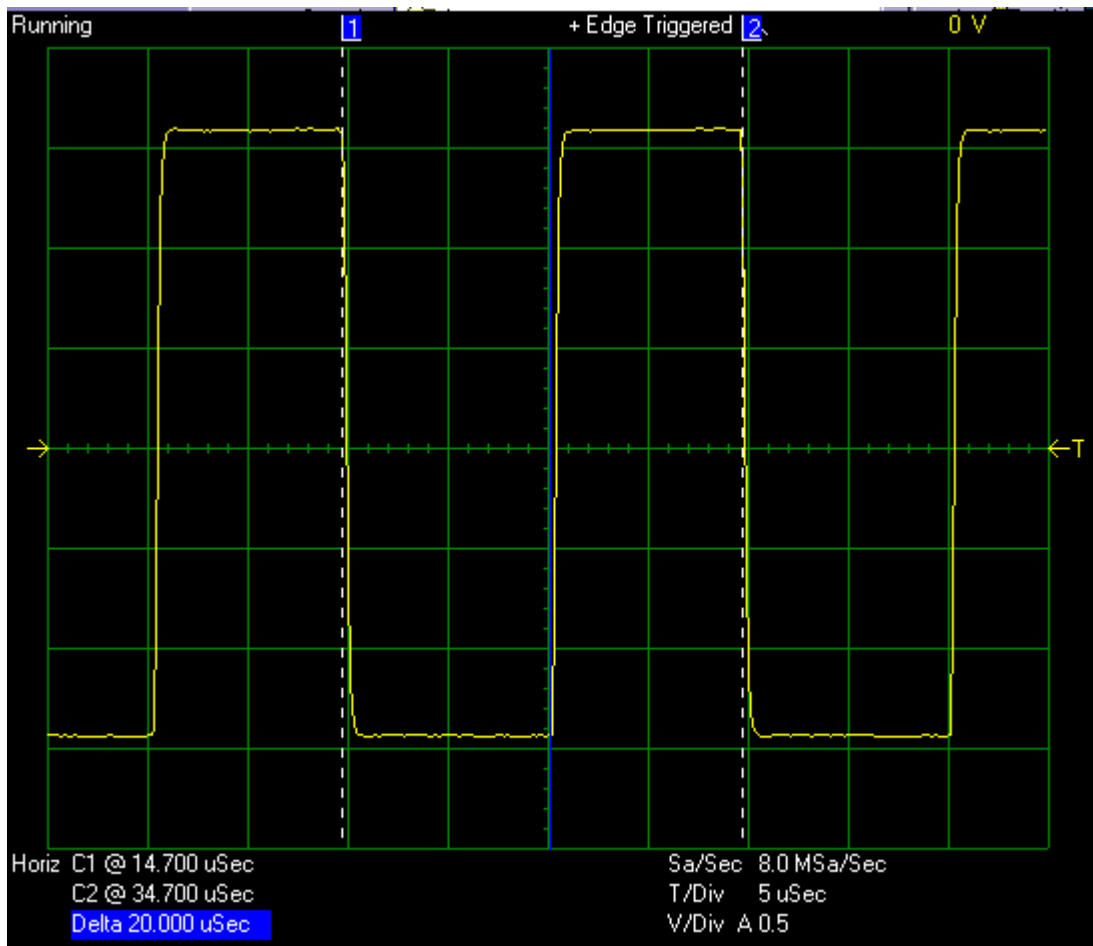


### 3.2.12 Timing Cursor

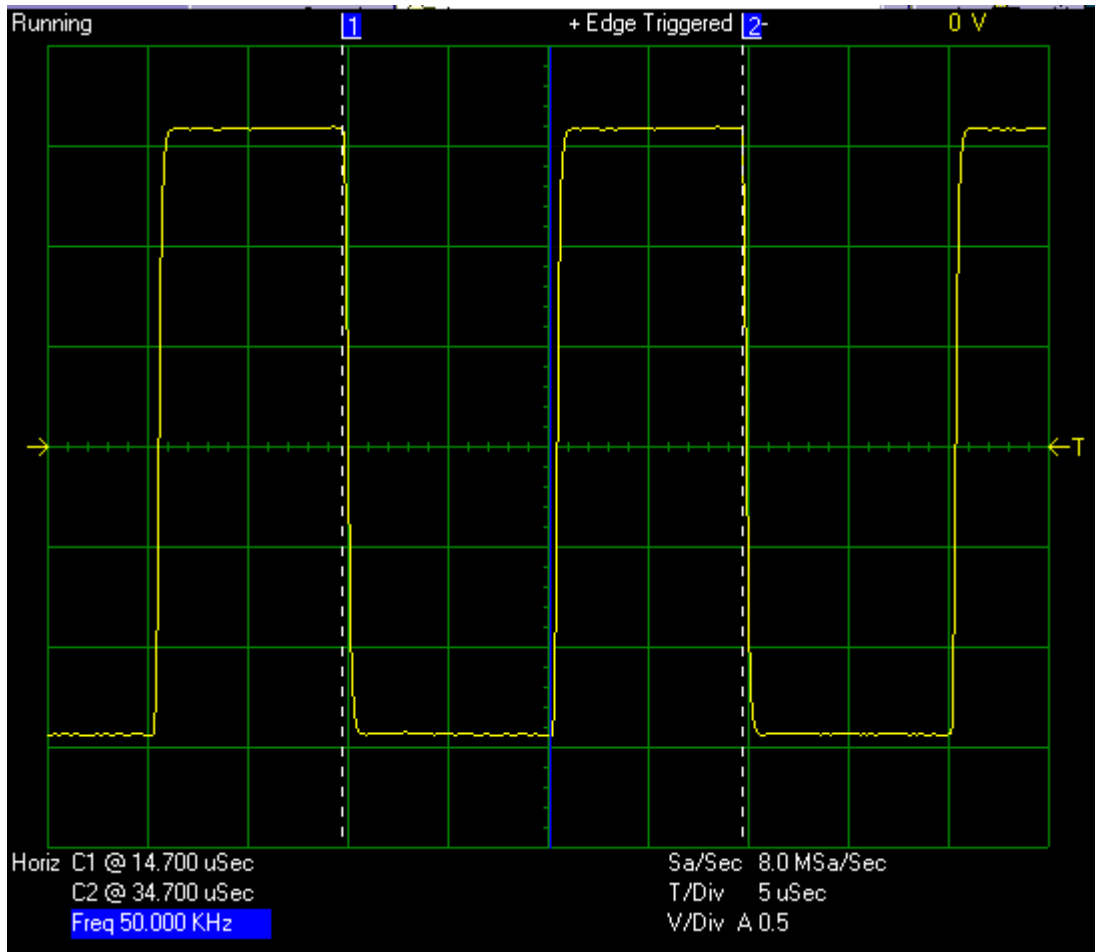
The "Timing Cursor" button is used to enable or disable the horizontal cursors.



The horizontal cursors may be used to measure the duration of a section of a waveform as shown below.



The values of the two cursor positions are displayed at the bottom left of the plot area, along with the difference between them. The difference has a blue background and the units may be changed by clicking on it. If the display shows time units and the user clicks on it, the units will change to frequency units.



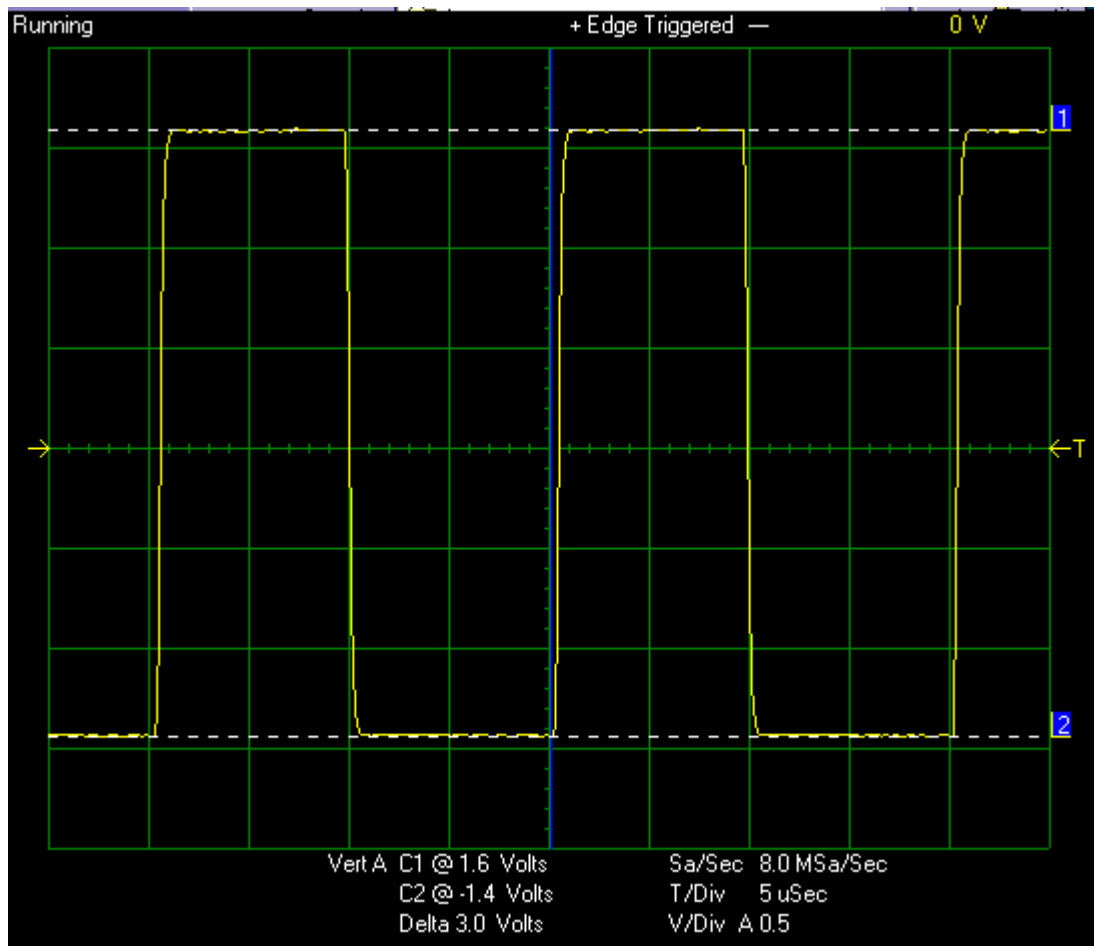
Similarly, if the display shows frequency units a click on the blue area will change the units to time units.

### 3.2.13 Y Cursor

The "Y Cursor" button is used to enable or disable the vertical cursors.



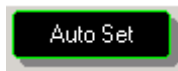
The vertical cursors can be used to measure the voltage difference between two points of a trace as shown below.



The values of the two cursor positions are displayed at the bottom of the plot area, along with the difference between them.

### 3.2.14 Auto Set

Clicking the "Auto Set" button will launch the auto set function. The button caption will read "Cancel" while the auto set function is running.



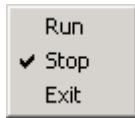
The auto set function attempts to home in on a signal and display it clearly on the plot area by optimising the timebase and gain settings for the detected signal. If no signal is detected, the auto set function will terminate.

The auto set function may be cancelled by clicking "Cancel".

## 3.3 Menu Functions

### 3.3.1 File Menu

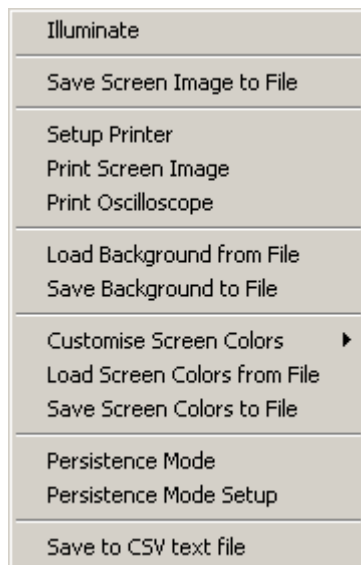
The File menu (shown below) allows alternative access to the Run and Stop functions (also accessible through the [Run/Stop button](#) on the front panel).



The Exit option allows the user to quit the application and has the same function as the Windows Close button .

### 3.3.2 Screen Menu

The screen menu (shown below) allows access to options for customising the appearance of the EasyScope interface and exporting data or images to files.



The menu items have the following functions:

#### **Illuminate**

This option has the same effect as the [Illuminate button](#) on the front panel.

#### **Save Screen Image to File**

This allows the plot area to be saved to a Windows Bitmap (.bmp) file. A Save As dialog box appears and prompts the user to provide a filename for the image.

#### **Setup Printer**

Allows configuration of a printer that is already installed. Options include paper size and orientation.

#### **Print Screen Image**

Sends the plot area of the EasyScope window to the printer.

#### **Print Oscilloscope**

Send the whole EasyScope window image to the printer.

#### **Load Background from file**

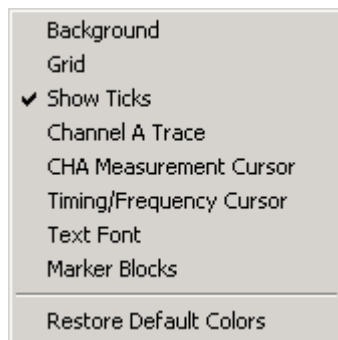
Allows the user to load a bitmap image as the background for the plot area.

#### **Save background to File**

Allows the user to save the current background to a file as a bitmap image.

### Customise Screen Colours

This brings up a sub-menu (shown below) that allows full customisation of the colours, fonts and backgrounds used. Colours can be reset to the original scheme by selecting "Restore Default Colors".



### Load Screen Colors from File

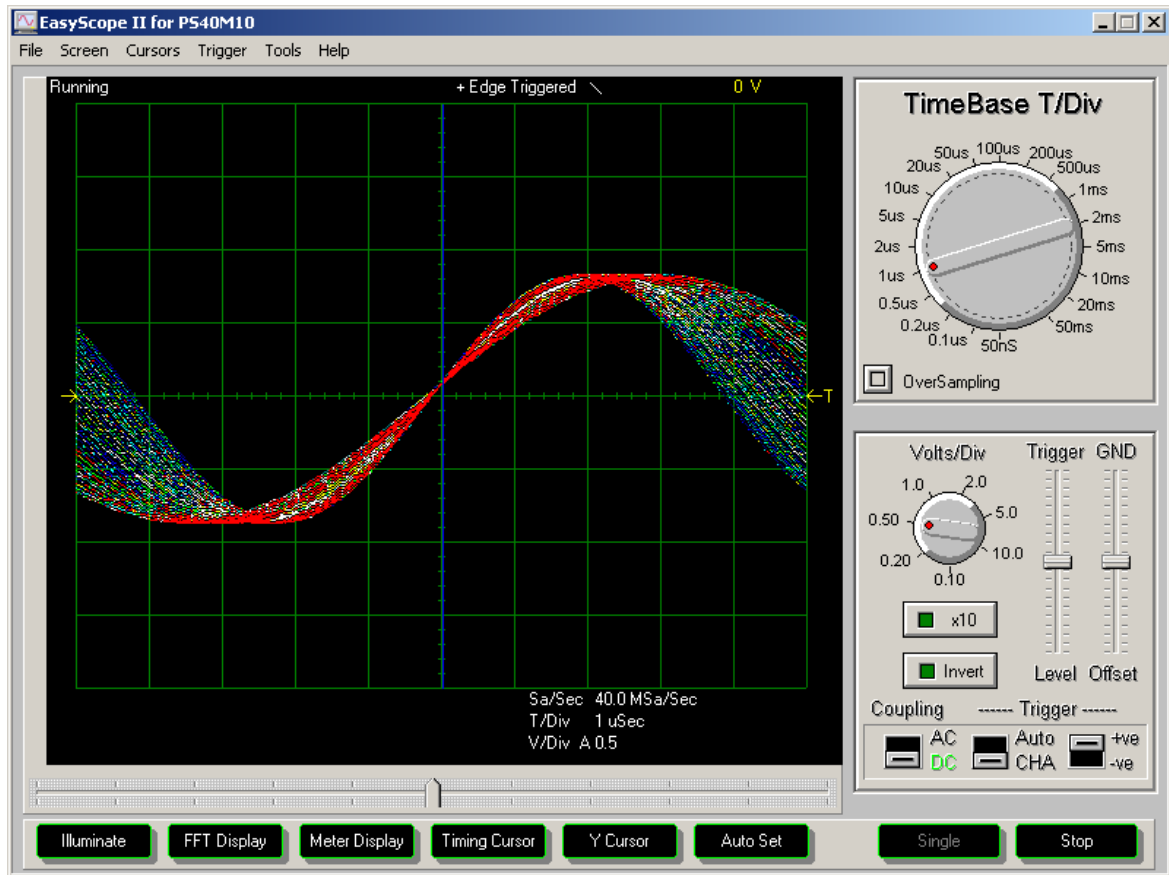
The color settings can be stored to a named file (\*.col). Different color themes can be stored and loaded quickly when required. A black and white color theme could be stored and used when printing oscilloscope or screen images.

### Save Screen Colors to File

The Customize Screen Colors menu can be used to select the display color theme which can then be saved to file (\*.col). Different colors can be used in 'Illuminate' and non Illuminate modes.

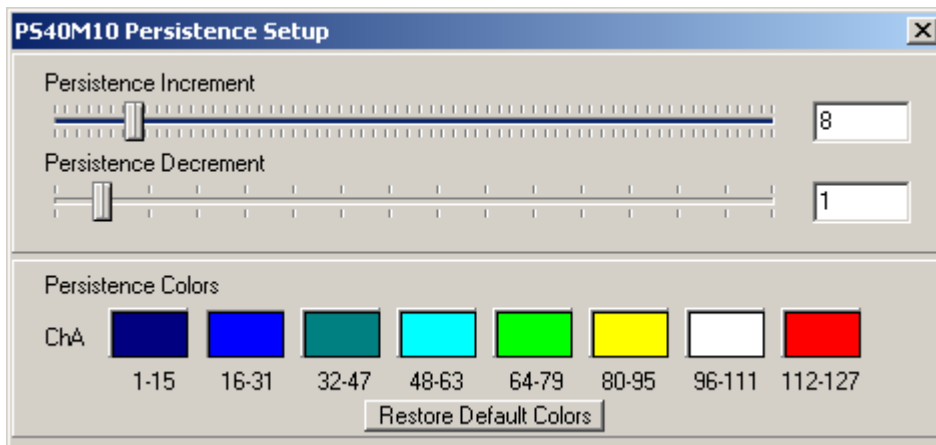
### Persistence Mode

A variable persistence mode display can be selected using this option. The persistence increment, decrement and colors are selected in the Persistence Mode Setup window. Infinite persistence can be selected by setting the persistence decrement to 0.



**Persistence Mode Setup**

This window enables the variable persistence mode options to be configured.

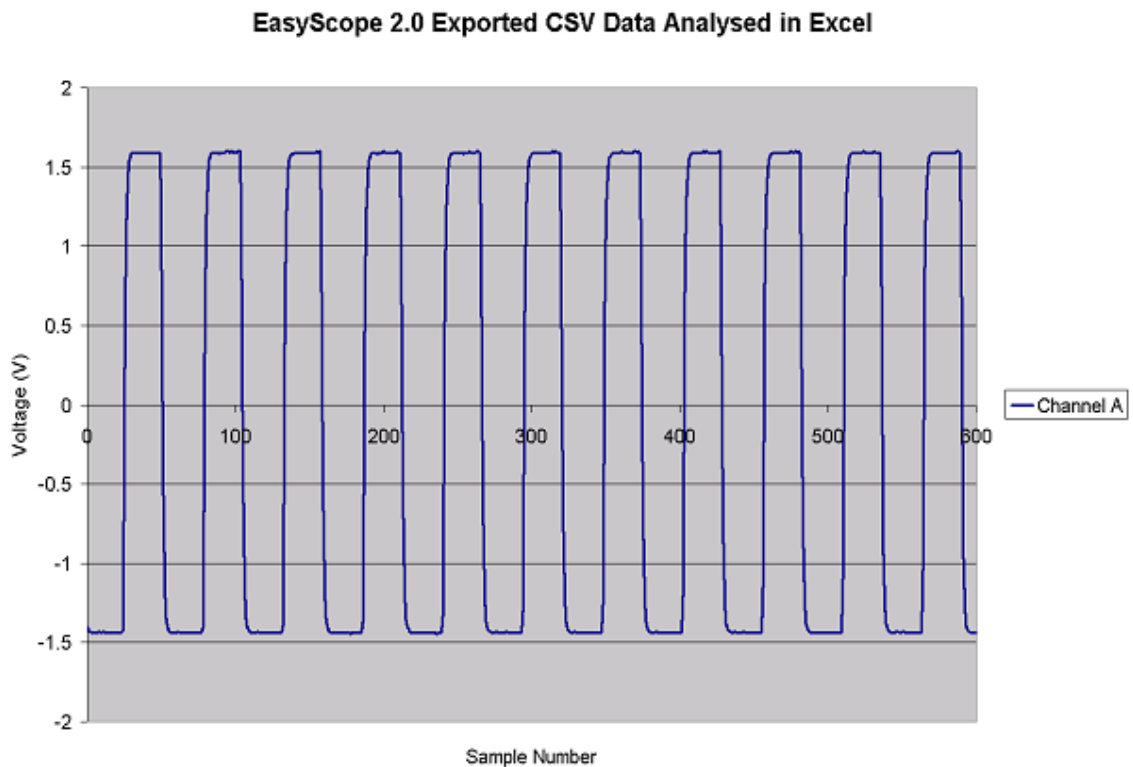


The persistence increment can be set to a value of between 1 and 64. Every time a display pixel is activated by the oscilloscope trace the 'persistence value' of that pixel is incremented by the persistence increment value. The maximum 'persistence value' is limited to 127. The persistence decrement can be set to a value of between 0 and 15. The persistence decrement value is also limited to the persistence increment value - 1. The persistence value of

every pixel is decremented by the persistence decrement value after a trigger and trace display event. The minimum 'persistence value' is limited to 0. Eight different colors can be selected to display a certain persistence value range. The colors for each pixel value range can be changed by clicking on the color box and selecting an alternative color from the color selection menu. The default persistence mode colors can be restored by clicking on the 'Restore Default Colors' button.

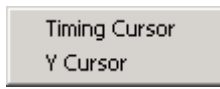
### Save To CSV Text File

This option exports the twenty most recent oscilloscope traces to a comma separated values (.csv) file. Column A contains the most recent trace through to column T which contains the oldest trace data. This can be used with 3<sup>rd</sup> party programs (for example Microsoft Excel) to manipulate and re-plot the data. The plot below was obtained from Excel using an exported .csv file.



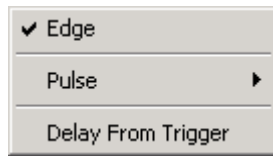
### 3.3.3 Cursors Menu

The options in the Cursors menu (shown below) have the same functions as the [Timing Cursor](#) and [Y Cursor](#) buttons respectively.



### 3.3.4 Trigger Menu

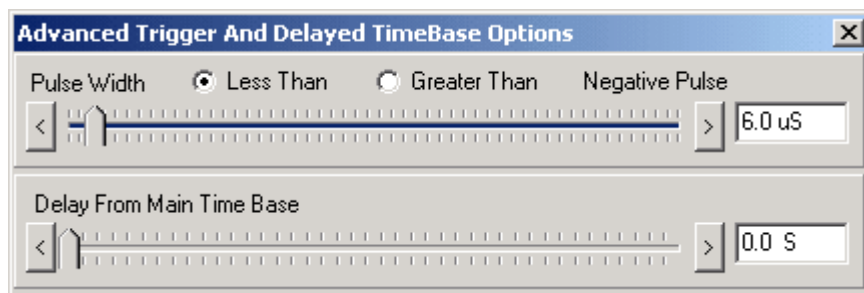
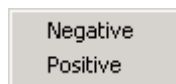
In addition to the [basic trigger settings](#) available on the front panel, this menu (shown below) allows advanced triggering options to be configured.



The default mode is edge triggering which can be set to trigger on a +ve (rising) or -ve (falling) edge using the front panel controls.

#### Pulse

Selecting Pulse from this menu disables edge triggering and enables pulse triggering. The user must select either Negative or Positive pulse from a sub menu (see below) and is then provided with an Advanced Trigger window (also below).

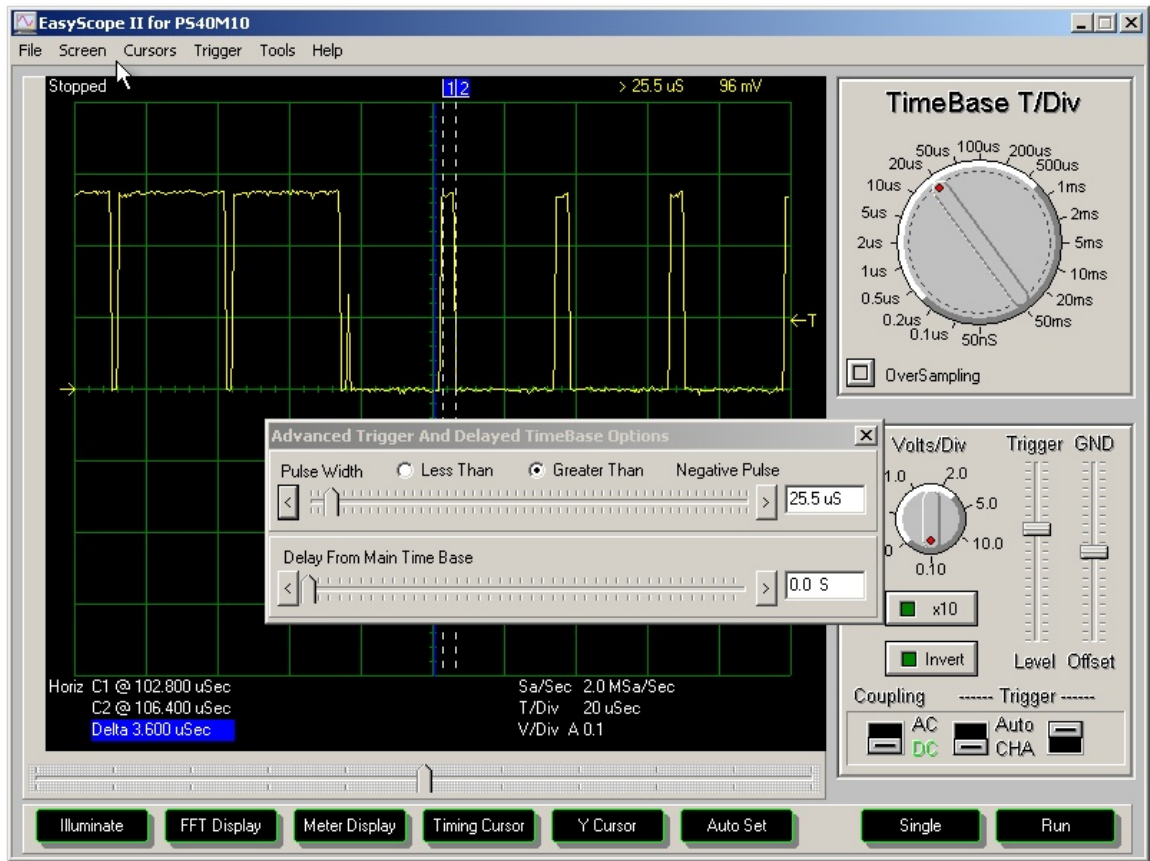


The example shown is for a negative pulse.

The user can then select options to trigger on a pulse of length greater than or less than the time indicated by the top slide bar. The value of the slide bar is displayed in the box to the right and may be changed by clicking on and dragging the slider.

This triggering method can be an extremely useful tool for finding "glitches".

The following screen shot which shows triggering on a TV vertical synchronisation signal using the pulse triggering feature of the PS40M10.

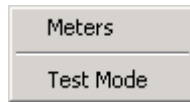


**Delay From Trigger**

The Delay From Trigger option also displays the Advanced Trigger and Delayed TimeBase Options window. This allows the data capture to be delayed from the trigger point by a specified time by using the slide bar at the bottom of the window.

### 3.3.5 Tools Menu

Two functions are available through the Tools menu (shown below)

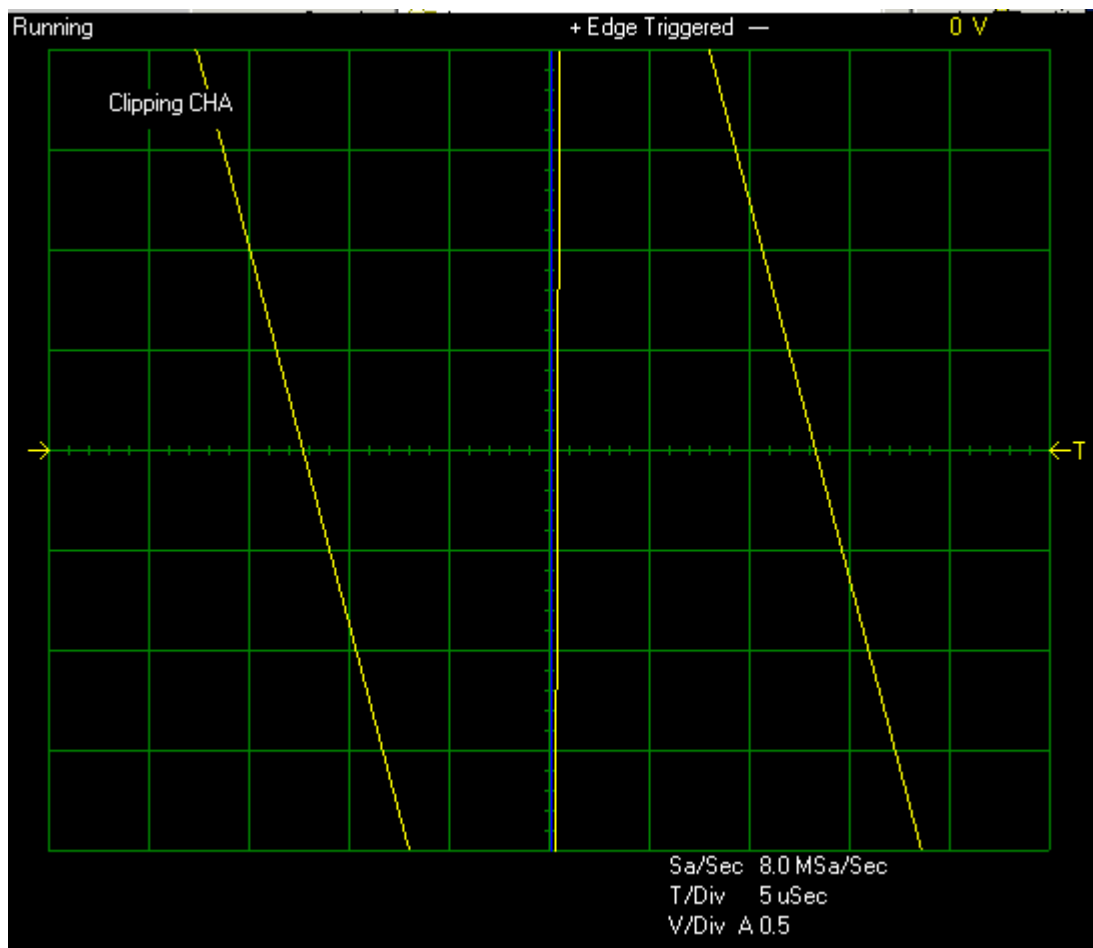


#### Meters

The Meters option provides the same functionality as the [Meter Display button](#). This makes the Meters window visible.

#### Test Mode

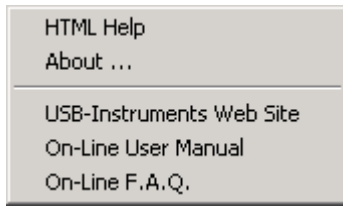
In test mode the EasyScope does not acquire real data but provides simulated data from a counter. This allows the communication with the PC to be verified. The display observed in test mode should always be a saw tooth type wave with clipping occurring (see picture below). The wave is at a frequency of 39062.5Hz.



Test mode must be disabled to acquire real data.

### 3.3.6 Help Menu

The following options are available through the Help menu (shown below).



#### **HTML Help**

Selecting HTML Help from the menu will launch this help file.

#### **About ...**

The About ... option displays version information and release dates.

#### **USB-Instruments Web Site**

This will connect to the Internet and take the user directly to the USB Instruments web site where information can be found on products and updates.


#### **On-Line User Manual**

This option will take the user to the EasyScope II manual section of the USB Instruments web site.

#### **On-Line F.A.Q.**

This link will open the frequently asked questions (F.A.Q.) section of the USB Instruments web site.

### 3.4 Quitting EasyScope II

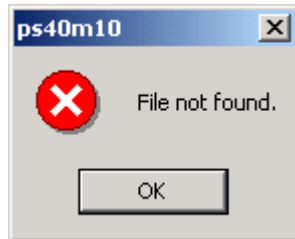
EasyScope can be exited by either accessing the Exit option of the [File menu](#) or clicking the Windows Close button  in the top right-hand corner of the window.

## 4 Appendix

### 4.1 Error Messages

#### 4.1.1 File Not Found

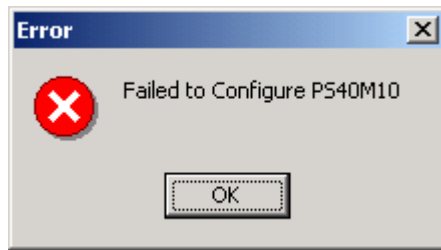
This error occurs when EasyScope II cannot find the file to program the PS40M10 hardware.



To resolve this problem click "OK", quit the EasyScope application and check that the file PS40M10.rbf exists in the same directory as the EasyScope application program. If the file is there, try to re-launch the EasyScope application ensuring that the instrument is connected to the PC. If the file is not there, it may be retrieved by re-installing from the installation CD.

### 4.1.2 Failed to Configure PS40M10

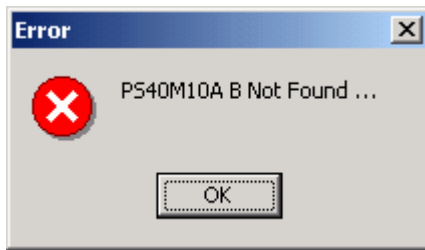
This error occurs when the EasyScope II application cannot detect any PS40M10 instruments connected to the PC when it is launched.



Ensure that the instrument is connected to the PC and that the correct drivers are installed, then re-launch the EasyScope II application.

### 4.1.3 PS40M10A B Not Found ...

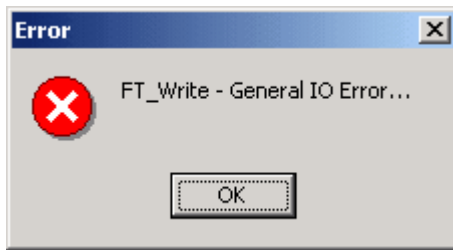
This error can occur when trying to run the EasyScope application with no PS40M10 hardware connected to the PC.



To resolve this, connect a PS40M10 to the PC and run the application again. If this has no effect, check that the drivers are installed correctly.

#### 4.1.4 FT\_Write - General IO Error...

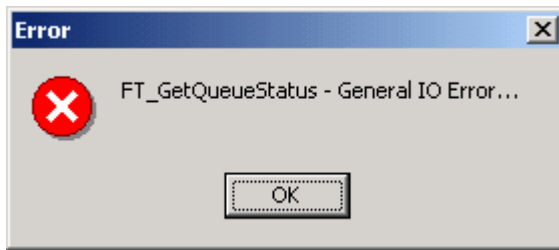
This error may occur if the PS40M10 is unexpectedly disconnected from the PC while the program is running.



A message box with this error may appear several times but will clear and run as normal after clicking "OK" on each message box that appears.

#### 4.1.5 FT\_GetQueueStatus - General IO Error...

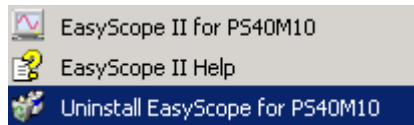
This error may occur if the PS40M10 is unexpectedly disconnected from the PC while the program is running.



A message box with this error may appear several times but will clear and run as normal after clicking "OK" on each message box that appears.

## 4.2 Uninstalling EasyScope II

From the Start -> Programs -> EasyScope II for PS40M10 menu on the Windows Toolbar, select the Uninstall EasyScope for PS40M10 Option and click on it.

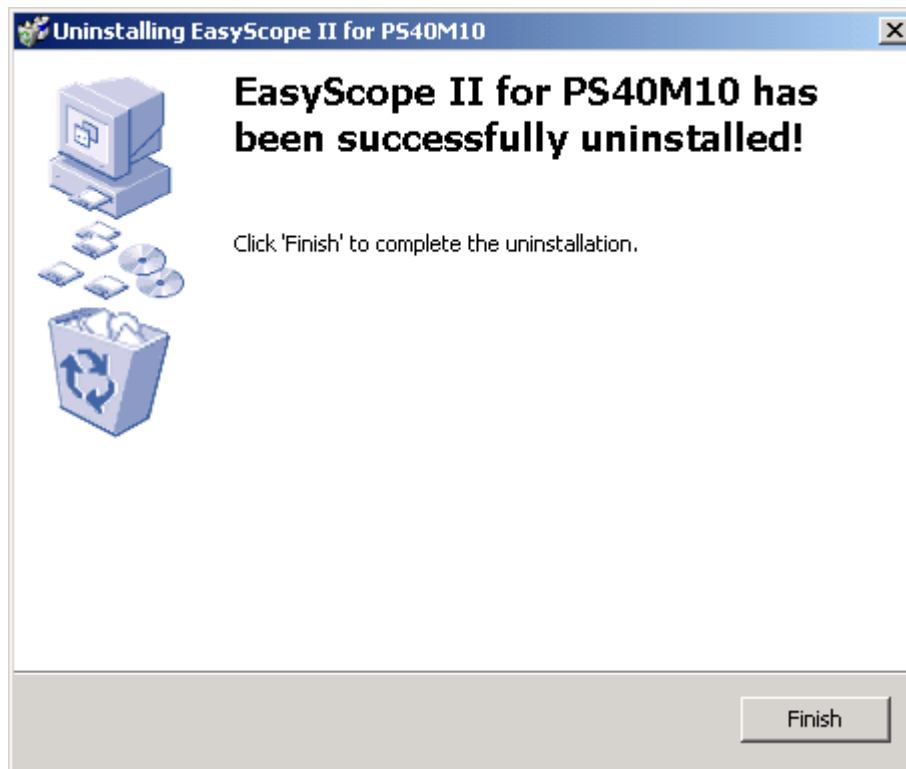


This will start the uninstaller program. The following confirmation screen will appear.



If you are sure you want to uninstall the EasyScope Program, click on "Next". If not, click on "Cancel" to abort the Uninstall process.

Clicking on "Next" starts the uninstall sequence. When the EasyScope Software is run for the first time, it automatically creates an INI file (easyscope.ini) to store program settings and two BMP files (DSBright.bmp and DSNormal.bmp) containing the images of the Normal and Bright screen themes. It is safe to delete these if asked by the uninstaller. In the course of using EasyScope the user may have saved some screen images and should decide if they want to keep these or not.



Click on "Finish".

# Index

## - A -

about 51  
AC 23  
acquire 14, 42  
adjust 41  
auto 20, 41, 48  
automatic 41  
automatically 41  
average 30  
averaging 30

## - B -

background 43  
bar 25  
Blackman 34  
buffer 25

## - C -

capture 14, 42  
CHA 20, 48  
clipping 17, 50  
color 26, 43  
colour 26, 43  
control 13, 16, 17, 20, 23, 24, 25, 26, 28, 29, 30, 31, 33, 34, 35, 38, 40, 41, 48  
controls 13  
cos 34  
cos2 34  
coupling 23  
csv 43  
Cur 38, 40, 47  
Cur A 47  
Cur Horiz 38, 47  
cursor 28, 38, 40, 47  
customise 43  
customize 43

## - D -

data 25, 31  
dB 35  
DC 23  
delay 20, 48  
delayed 20, 48  
detect 41  
difference 38, 40, 47  
display 26  
divisions 16, 17  
driver 5, 10  
drivers 5, 10  
duration 38, 47

## - E -

easyscope 3, 4, 5, 10, 13, 14, 16, 17, 19, 20, 23, 24, 25, 26, 28, 29, 30, 31, 33, 34, 35, 38, 40, 41, 42, 43, 47, 48, 50, 51, 52, 53, 54, 55, 56, 57, 58  
edge 20, 48  
error 53, 54, 55, 56, 57  
exit 14, 42, 52

## - F -

failed 54  
failed to program penscope hardware 54  
fast 28, 29, 30, 31, 33, 34, 35  
fast Fourier transform 28, 29, 30, 31, 33, 34, 35  
features 4, 13  
FFT 28, 29, 30, 31, 33, 34, 35  
file 43, 53  
file not found 53  
found 53, 55  
Fourier 28, 29, 30, 31, 33, 34, 35  
frequency 28, 29, 30, 31, 33, 34, 35, 38, 47, 50  
FT\_GetQueueStatus 57  
FT\_Write 56  
function 28, 29, 30, 31, 33, 34, 35  
functions 13

## - G -

gain 17, 41

Gauss 34  
General IO Error 56, 57  
GND 19  
grid 26  
ground 19

## - H -

Hamming 34  
hardware 54  
help 51  
hide 26  
Horiz 38, 47  
horizontal 25, 38, 47  
HTML 51  
HTML help 51

## - I -

illuminate 26, 43  
image 43  
impedance 23  
input 23  
install 5, 10, 58  
installation 5, 10, 58  
installing 5, 10, 58  
instrument 13, 14, 16, 17, 19, 20, 23, 24, 25, 26,  
28, 29, 30, 31, 33, 34, 35, 38, 40, 41, 42, 43, 47, 48,  
50, 51, 52, 53, 54, 55, 56, 57, 58  
introduction 3  
inverse 24  
invert 24  
IO 56, 57

## - L -

level 20, 48  
linear 35  
log 35  
logarithmic 35

## - M -

magnitude 35  
manual 29  
max 50

maximum 50  
mean 50  
measure 38, 40  
menu 42  
meter 50  
meters 50  
min 50  
minimum 50  
mode 50  
mV 19, 20, 48

## - N -

negative 20, 48

## - O -

offset 19  
on-line 51  
overview 3, 13

## - P -

pad 31  
padding 31  
peak 50  
peak-to-peak 50  
penscope 3, 4, 5, 10, 13, 14, 16, 17, 19, 20, 23, 24,  
25, 26, 28, 29, 30, 31, 33, 34, 35, 38, 40, 41, 42, 43,  
47, 48, 50, 51, 52, 53, 54, 55, 56, 57, 58  
persistence 43  
phase 35  
picture 43  
points 31  
positive 20, 48  
power 35  
print 33, 43  
program 54  
PS40M10.rbf 53  
ps40m10b 55  
ps40m10b not found 55  
pulse 20, 48

## - Q -

quit 52

## - R -

rectangle 34  
reference 19  
remove 58  
RMS 50  
root 50  
run 14, 42

## - S -

save 33, 43  
save as 33, 43  
scale 16, 17, 19, 29  
scroll 25  
seek 41  
set 41  
show 26  
single 14, 42  
size 31  
slide 25  
software 5, 13, 14, 16, 17, 19, 20, 23, 24, 25, 26,  
28, 29, 30, 31, 33, 34, 35, 38, 40, 41, 42, 43, 47, 48,  
50, 51, 52, 53, 54, 55, 56, 57, 58  
specification 3, 4  
spectrum 35  
square 50  
stop 14, 42

## - T -

t/div 16  
test 50  
time 16, 38, 47  
timebase 16, 41  
timing 38  
Timing Cursor 38  
tools 50  
transform 28, 29, 30, 31, 33, 34, 35  
triangle 34  
trigger 20, 48

## - U -

uninstall 58

un-install 58  
uninstallation 58  
un-installation 58  
uninstalling 58  
un-installing 58  
USB 10  
usb instruments 51  
user 51  
user manual 51

## - V -

v/div 17  
vertical 29, 40, 47  
volt 50  
voltage 17, 40, 47, 50  
volts 17, 40, 47, 50

## - W -

web 51  
web site 51  
width 20, 48  
window 28, 34  
wizard 10

## - Y -

Y 40  
Y Cursor 40

## - Z -

zero 19, 31